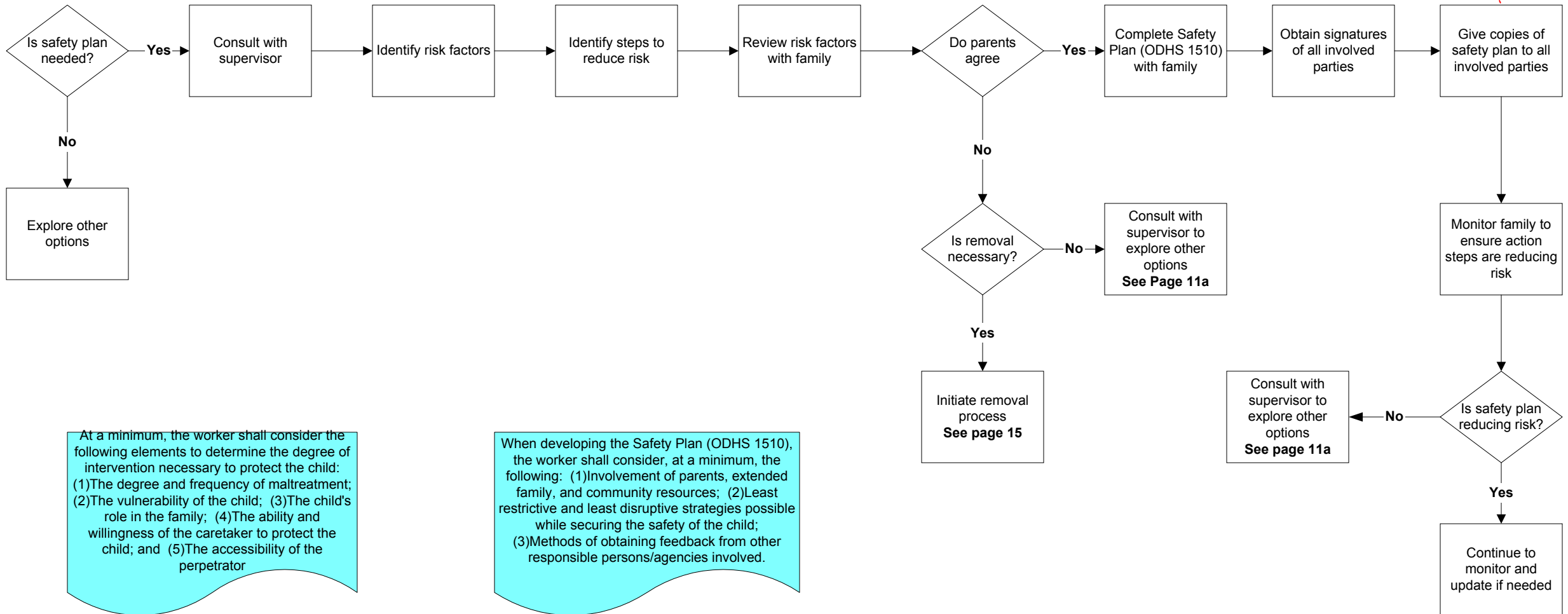


Safety Planning

For further information see Ohio Administrative Code Rule 5101:2-34-37

The safety plan should be understandable to the parents. Give examples of alternatives, if applicable. All activities listed should have a direct correlation to reducing risk to the child and keeping the child safe.

The parents and anyone participating in the execution of the safety plan should receive a copy of the plan. The supervisor of the unit handling the case also is to receive a copy of the safety plan.



At a minimum, the worker shall consider the following elements to determine the degree of intervention necessary to protect the child:
 (1)The degree and frequency of maltreatment;
 (2)The vulnerability of the child; (3)The child's role in the family; (4)The ability and willingness of the caretaker to protect the child; and (5)The accessibility of the perpetrator

When developing the Safety Plan (ODHS 1510), the worker shall consider, at a minimum, the following: (1)Involvement of parents, extended family, and community resources; (2)Least restrictive and least disruptive strategies possible while securing the safety of the child; (3)Methods of obtaining feedback from other responsible persons/agencies involved.